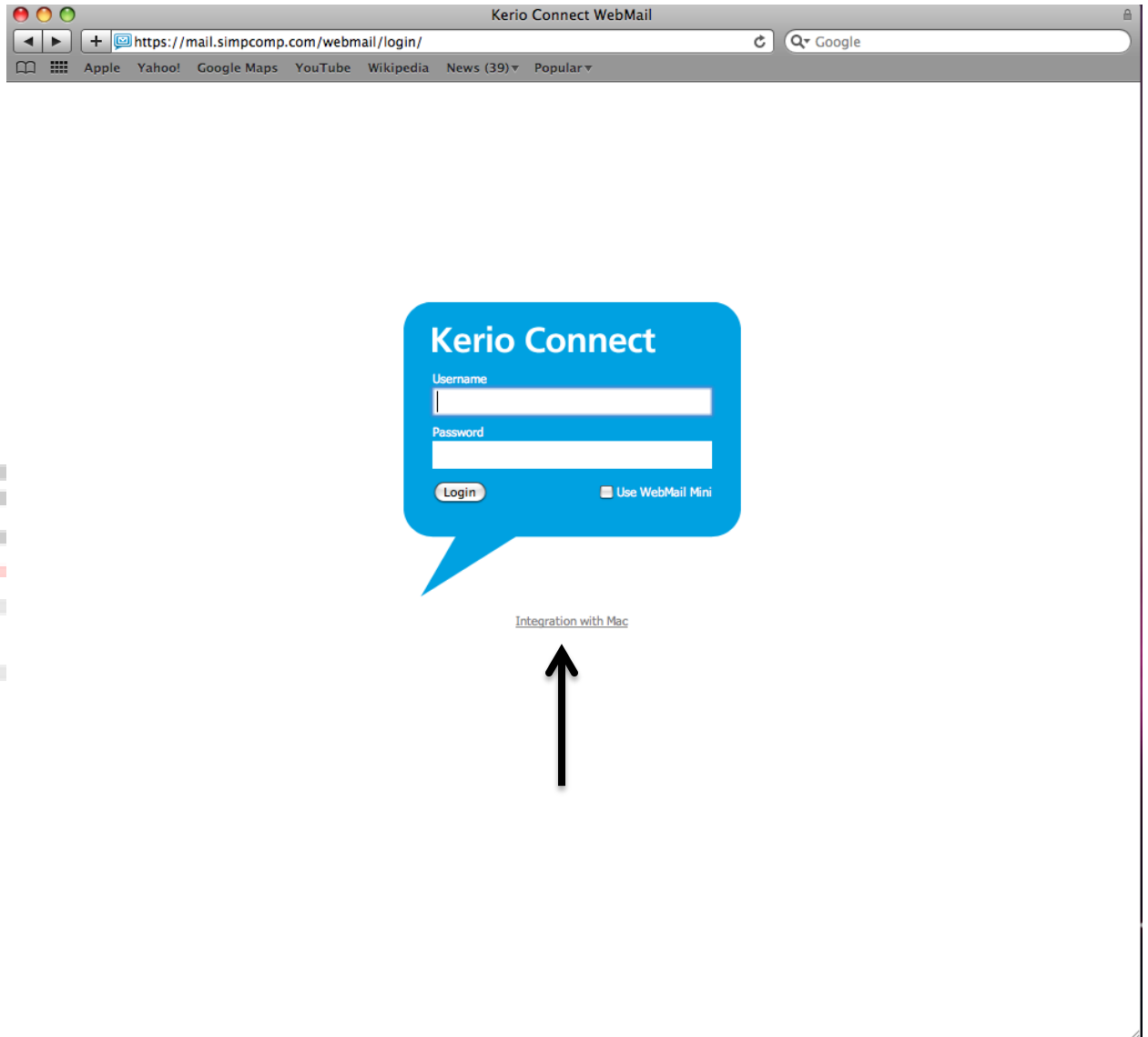


# Connecting Kerio with a Mac

1. **Open Safari** and type mail.simpcomp.com
2. **Click** below the login screen **Integration with Mac**

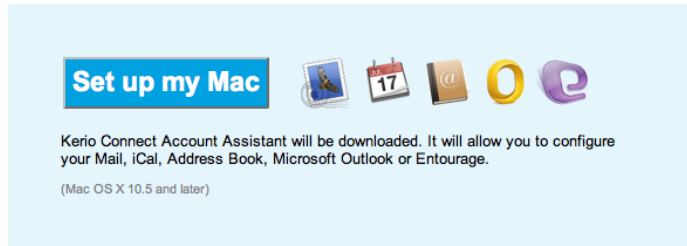


### 3. Click **Set up my Mac**

#### Integration with Mac

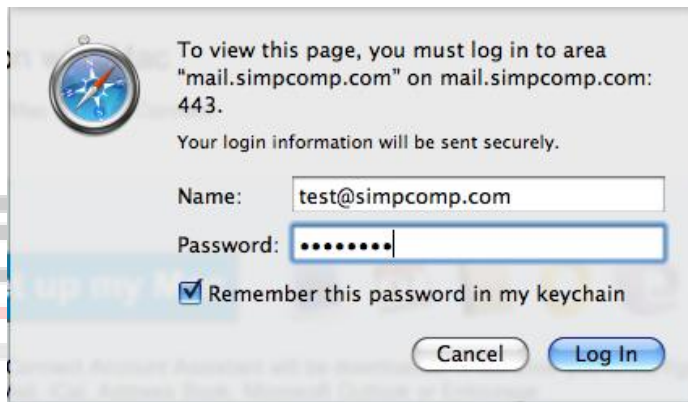
[Windows](#) | [Linux](#)

Connect your Mac to Kerio Connect:



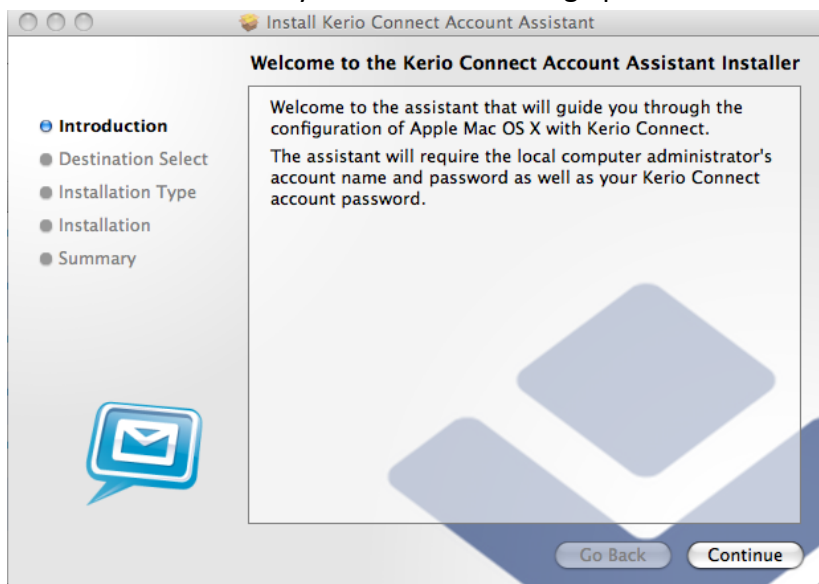
[See other options](#)

### 4. Enter in your **E-mail account** and **password**

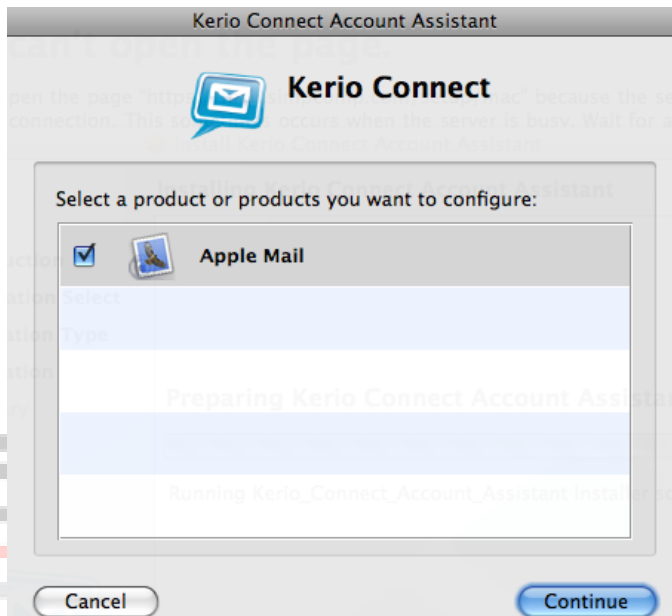


The image shows a standard Mac OS X login dialog box. It has a title bar with a compass icon. The text inside says: "To view this page, you must log in to area 'mail.simpcomp.com' on mail.simpcomp.com: 443. Your login information will be sent securely." Below this, there are two input fields: "Name:" with the text "test@simpcomp.com" and "Password:" with a masked password of seven dots. There is a checked checkbox labeled "Remember this password in my keychain". At the bottom, there are two buttons: "Cancel" and "Log In".

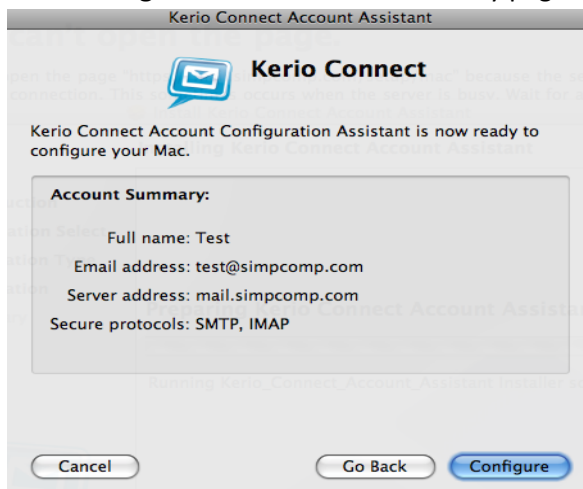
### 5. Kerio will automatically download and bring up an installation page



- a. *Press Continue*
  - b. *Press Install*
  - c. *Enter your computer Username and Password*
  - d. Kerio will now install
6. Kerio will not sync with iCal so *press Continue*
  7. Make sure Apple Mail has a check next to it and *press Continue*



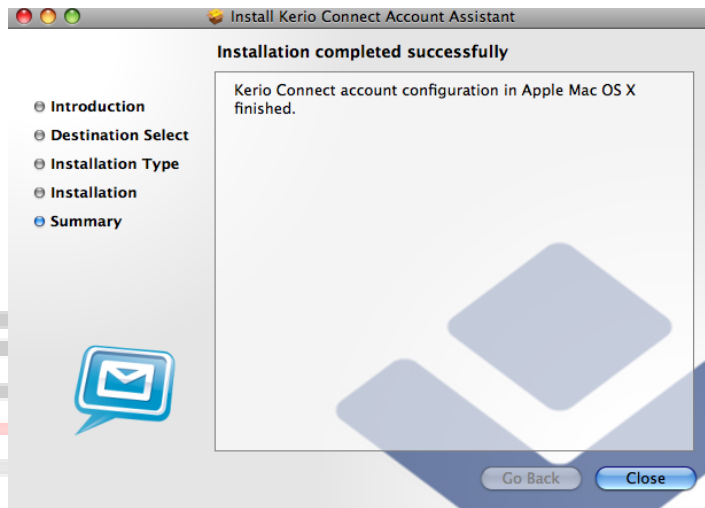
8. *Type in your E-mail Username and Password* (make sure to use [test@example.com](mailto:test@example.com) format) and *press Continue*
9. *Press Configure* on the Account Summary page



10. If Mail is open, Kerio will ask you to exit which may require you to Force Quit by:
  - a. *Pressing* the Apple in the top left
  - b. *Click* Force Quit
  - c. *Click* on Kerio
  - d. *Press* Continue

11. Kerio will configure your new email profile for you

12. Press Close on the Summary Page



13. *Open Mail* and your new account will be linked and ready to send and receive mail